

CONVERT CGM to Vector™



Convert CGM files to SVG, PDF and EPS files.

Convert CGM graphics to vector elements, including lines, text, bezier curves and filled paths, to an equivalent SVG, PDF or EPS format, preserving fonts and retaining graphical accuracy. An excellent tool for technical publishing professionals, requiring the conversion of CGM technical drawings and illustrations. This is a true vector to vector conversion, reproducing high quality graphics.

The SVG output option is ideal for HTML5 publishing applications, retaining all the WebCGM interactivity. It also preserves an embedded raster image.

General Features:

- Convert Single or Batches of CGM files
- Ignores files with errors, creates a text log for post conversion investigation
- Line width scaling options
- Document Scaling:
 - Scale to fit a specified size or scale by percent.

SVG Output Features:

- Convert all versions of CGM to SVG
- Output Text as SVG text with font information
- Supports embedded raster images
- Preserves WebCGM metadata:
 - hotspot regions, links and screen tips
- Supports TECH SVG profile

Desktop Version

Compliant with Windows based computers. Provides an easy to use interface, simply select the CGM files for conversion, choose the output format, and the directory to place the newly converted files.

Network Version

Use the standalone version on multiple computers.

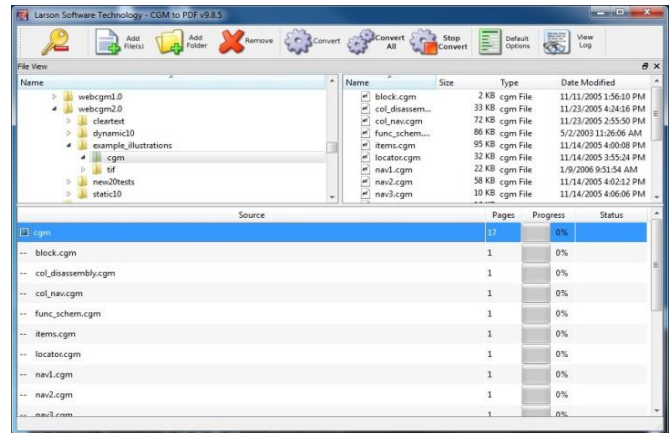
Command Line Version

The Command Line option uses control parameters, providing the ability to "automate and configure" your conversion work-flow.

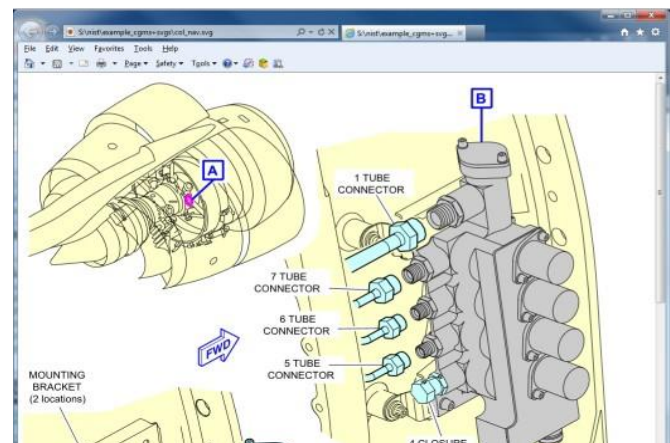
Software Development Kit (SDK)

Integrate the Larson CGM to Vector technology into third party applications.

Graphical User Interface, Desktop & Network Versions



SVG viewed in Web Browser



License: Perpetual

Versions: Desktop, Network, Command Line and SDK.

Platforms: Windows 7, 8 and 10, Server 2008 and later, Linux

Input: CGM v1-4

Input Profiles: ATA, CALS, PIP, S1000D, WebCGM

Output: SVG, PDF and EPS

Output Profiles: TECH SVG

